

# PRODUCT INFO

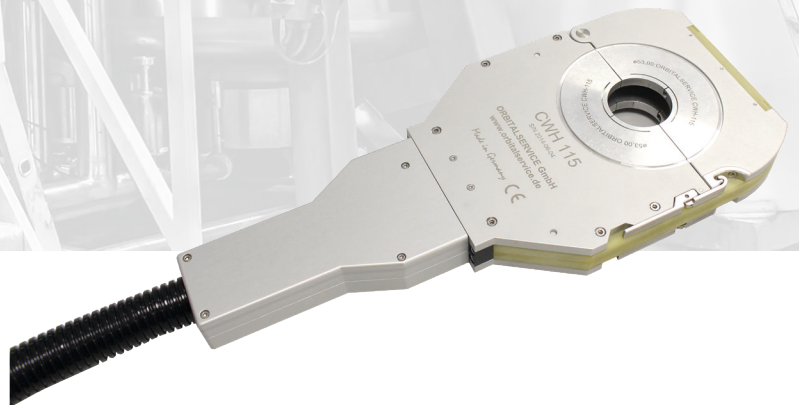


*Please scan  
the QR-Code  
to get the  
digital  
product info  
data sheet.*



**CWH**

**CLOSED WELD HEADS**



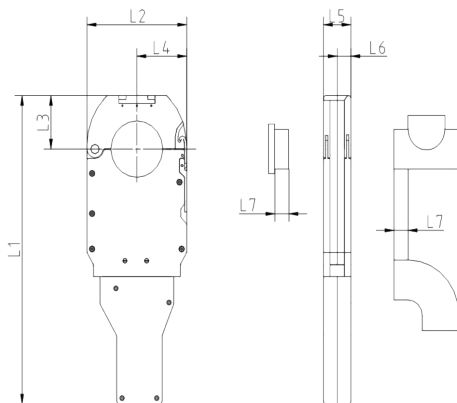


## CWH

### Closed weld heads

- Compact and handy closed weld heads
- Unique rotor-guiding system (absolutely free of play)
- Robust handle made of high- strength aluminium
- Novel, springing clamp-system (trade mark)
- Slimmest weld heads in their overall size on the market
- Handle and hose package compatible for several weld heads (changing system)
- Applicable water- or gas cooled (CWH-21 and CWH-38 only gas cooled)  
– separate current- and water cables
- Length of the hose package: 8 m, on demand it can be longer
- Ergonomic clamping levers, which fit in the side frames

DATA //



weld head	range	dimensions						
		L1	L2	L3	L4	L5	L6	L7 min
<b>CWH-115</b>	8 – 114,3 mm (0.31" – 4.52")	470 mm (18.50")	200 mm (7.87")	98 mm (3.86")	100 mm (3.94")	38 mm (1.50")	19 mm (0.75")	19 mm (0.75")
<b>CWH-76</b>	6 – 76,2 mm (0.250" – 3.0")	436 mm (17.17")	160 mm (6.30")	79 mm (3.11")	80 mm (3.15")	38 mm (1.50")	19 mm (0.75")	19 mm (0.75")
<b>CWH-53</b>	6 - 53 mm (0.250" - 2.0")	422 mm (16.61")	138 mm (5.43")	68 mm (2.68")	69 mm (2.72")	38 mm (1.50")	19 mm (0.75")	19 mm (0.75")
<b>CWH-38</b>	3,17 - 38,1 mm (0.125" - 1.50")	365 mm (14.37")	108 mm (4.25")	50 mm (1.97")	54 mm (2.13")	28 mm (1.10")	14 mm (0.55")	14 mm (0.55")
<b>CWH-21</b>	3,17 - 21,3 mm (0.125" - 0.82")	339 mm (13.35")	70 mm (1.76")	36 mm (1.42")	35 mm (1.38")	28 mm (1.10")	14 mm (0.55")	14 mm (0.55")