



MADE IN GERMANY

CLOSED WELD HEADS

CWH



Our CWH closed welding heads are the slimmest in orbital welding, covering diameters from 3 to 114.3 mm (0.12" to 4.5"). The spring steel clamping system (CWH 21 & CWH 38) offers easy handling, cost efficiency, and reusability. The CWH 21 can also be converted into a scroll block for precise, centered welding.

For larger applications, the water-cooled CWH 53, CWH 76, and CWH 115 feature patented spring-loaded clamping jaws for secure, high-quality welds.

HIGHLIGHT

- Water- or gas cooled (CWH-13, CWH-21 and CWH-38 gas cooled only)
- Available in tachogenerator-version (AMI, Orbitalum, Magnatech, ESAB, ...)
- Novel, springing clamp-system (trademark)
- 8 m long hose, longer on demand
- Longlife aluminium collets (CWH-21, CWH-38, CWH-53, CWH -76 and CWH-115)
- Interchangeable cassettes for the CWH-13
- Accessories: Stabile suitcase with first-class foam material-insert

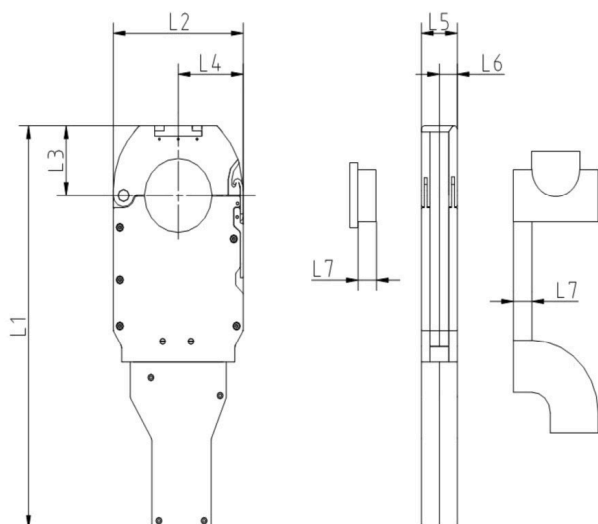


Optional holder



+49 (0)6092 822 940
info@orbitalservice.de

TECHNICAL DATA



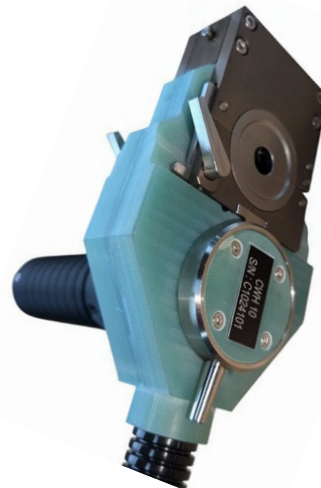
| weld head | range | dimensions | | | | | | | weight |
|-----------|------------------------------------|--------------------|-------------------|------------------|--------------------|--------------------|-------------------|------------------|----------------------|
| | | L1 | L2 | L3 | L4 | L5 | L6 | L7 | |
| CWH-13 | 3,17– 12,7 mm (0.125" – 0.50") | 242 mm (9.53") | 64 mm (2.52") | 6,1mm (0.24") | 32,7 mm (1.29") | 12,2 mm (0.48") | 6,3 mm (0.25") | 6 mm (0.25") | 5,0 kg 11.02 lbs |
| CWH-21 | 3,17 – 21,3 mm (0.125" – 0.82") | 339 mm (13.35") | 70 mm (1.76") | 36mm (1.42") | 35 mm (1.38") | 28 mm (1.10") | 14 mm (0.55") | 14 mm (0.55") | 7,3 kg 16.09 lbs |
| CWH-38 | 3,17 – 38,1 mm (0.125" – 1.50") | 365 mm (14.37") | 102 mm (4.02") | 49 mm (1.93") | 51 mm (2.00") | 28 mm (1.10") | 14 mm (0.55") | 14 mm (0.55") | 7,6 kg 16.76 lbs |
| CWH-53 | 6 – 53 mm (0.25" – 2.0") | 392 mm (15.43") | 138 mm (5.43") | 68 mm (2.68") | 69 mm (2.68") | 38 mm (1.50") | 19 mm (0.75") | 19 mm (0.75") | 9,5 kg 20.94 lbs |
| CWH-76 | 6 – 76,2 mm (0.25" – 3.00") | 436 mm (17.17") | 160 mm (6.30") | 79 mm (3.11") | 80 mm (3.15") | 38 mm (1.50") | 19 mm (0.75") | 19 mm (0.75") | 10,0 kg 22.05 lbs |
| CWH-115 | 8 – 114,3 mm (0.31" – 4.52") | 470 mm (18.50") | 200 mm (7.87") | 97 mm (3.82") | 100 mm (3.94") | 38 mm (1.50") | 19 mm (0.75") | 19 mm (0.75") | 15 kg 33.07 lbs |



MADE IN GERMANY

Closed Weld Head

CWH5H/CWH10H



The Orbitalservice CWH5H and CWH10H have been designed to respond to the highest demands in the high purity welding industries. The heavy duty integrated water cooling makes this head unique on the market.

Made for the high purity welders

These orbital weld heads are specially designed for small tube diameters from 3.0 mm to 25.4 mm (0.118" - 1") and wall thicknesses up to 2.0 mm (0.079") like those used in production systems from the semi-conductor industry. These heads are with a removable clamping bloc which can be very easily positioned around the tubes to be welded in inline assembly at the welding site or prefab production of panels in the workshop.



HD Water cooling



The integrated heavy duty water cooling protects the closed head from overheating. Furthermore, it reduces the cooling time and increases the production.

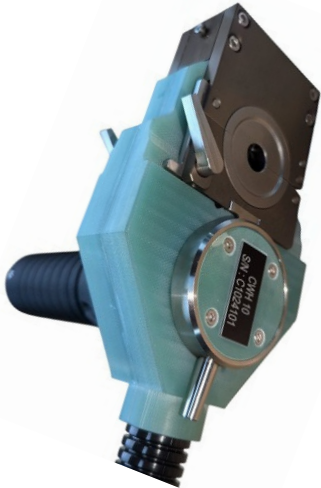


ORBITALSERVICE®
THE FUTURE OF ORBITAL WELDING. TODAY AND TOMORROW

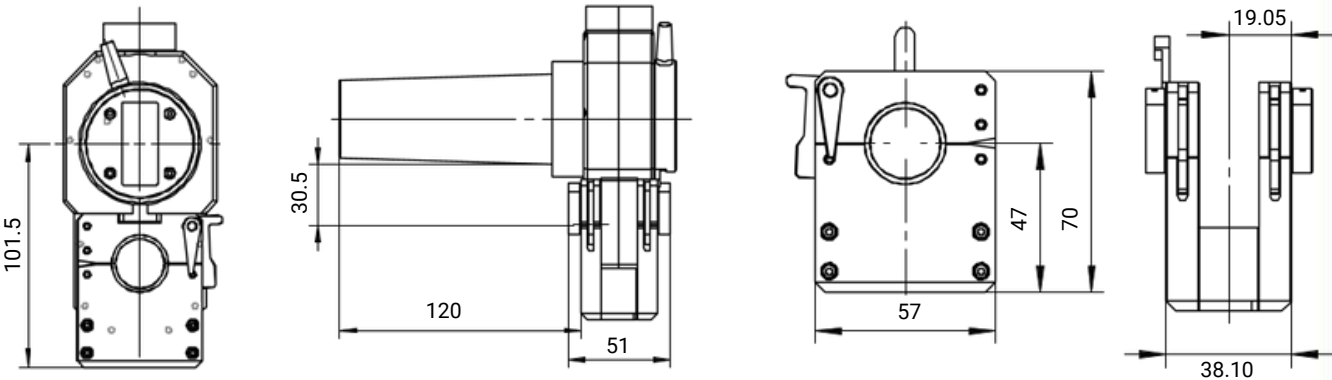
+49 (0)6092 822 940
info@orbitalservice.de

Closed Weld Head

CWH5H

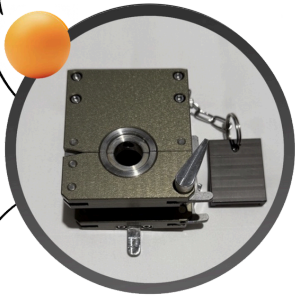


DIMENSIONS



PRODUCT DETAILS

Clamping Cassette with
electrode distance gage
included



Possibility to weld different tube
configurations (Tube/Tube – Tube/elbow union
– Fitting/Fitting - ...)

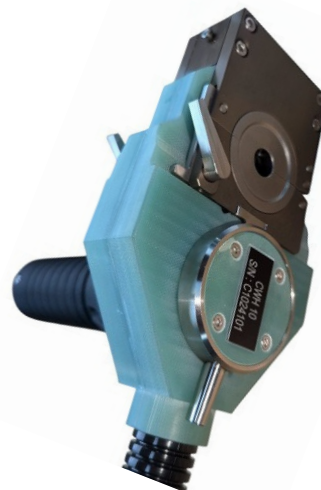
| | |
|---------------------|--|
| Tube OD min-max | 3 mm - 15.88 mm 1/8" - 5/8" |
| Electrode diameter | 1.6 mm 0.063" |
| Weight | 1,5 kg /3.3 lbs w/o hose package 5,8 kg / 12.79 lbs with hose package |
| Hose package length | 9.5 m 29.5 ft |



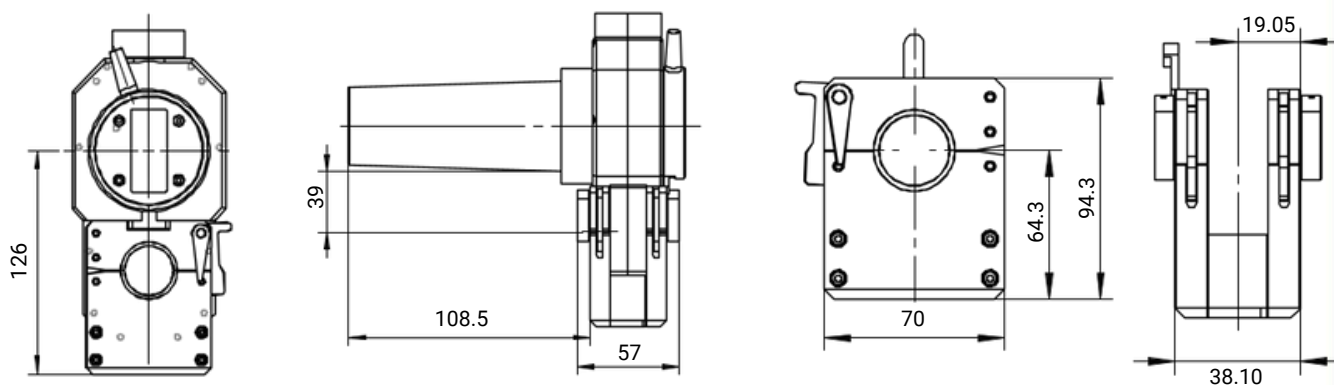
MADE IN GERMANY

Closed Weld Head

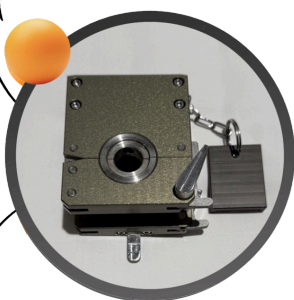
CWH10H



DIMENSIONS



Clamping Cassette with
electrode distance gage
included



Possibility to weld different tube
configurations (Tube/Tube – Tube/elbow union
– Fitting/Fitting - ...)

PRODUCT DETAILS

| | |
|---------------------|--|
| Tube OD min-max | 6.35 mm - 25.4mm 1/4" - 1" |
| Electrode diameter | 1.6 mm 0.063" |
| Weight | 1,8 kg / 3.9 lbs w/o hose package 6,1 kg / 13.45 lbs with hose package |
| Hose package length | 9.5 m 29.5 ft |



ORBITALSERVICE®
THE FUTURE OF ORBITAL WELDING. TODAY AND TOMORROW

+49 (0)6092 822 940
info@orbitalservice.de